

IDEALPLUSING TECHNOLOGY

Office Address: Room 122 1/F Building 1,
NO.38 Gaopu Road, TianHe,GZ, China.

Factory #1 Address: 7/F,Block A,Canbo Tec.park,
North of HuaFa Road,Gongming,Guangming new
Dis. ,SZ,China.



Factory #2 Address: 3/F,Building C,
HengTongFa Industrial Area, TangTou Industrial
Park, ShiYan Street, Baoan Area,SZ,China.

Factory #3 address: 4/F, No 188 Area LangBei New
town 2#, TongDe Community, BaoLong Street,
LongGang Area,SZ,China.

CONTENT

1	Company History & Introduction	P3~P4
2	Company Certificate	P5~P6
3	R&D System	P7~P10
4	Raw Material Control System	P11
5	Production Process	P12~P16
6	Company Culture	P17
7	COMMITMENT	P18
8	Our Team & Key Person	P19
9	Product Introduction	P20~P65
10	FAQ COLLECTION	P66~P70
11	After-sales support	P71
12	Customer Review	P72
13	End	P73~74

1.1 Company History

2007	Chinese Brand QS established, focus on DC AC inverter, rectifiers;
2008	Established Beijing office, focus on China North market;
2012	Chinese brand XL established, focus on AC DC Converters;
2015	Chinese brand EVEP established, focus on DC DC converters;
2016	Established Guangzhou Tianhe office, focus on international market;
2017	Established Alibaba shop, focus on international market;
....	

1.2 Company Introduction



- A. We have 3 own factories (locate in shenzhen China), and more than 10 cooperated factories, more than 60 workers and 1000 different models with specification of power supply.
- B. It is one of suppliers on integrating , developing, manufacture , sales,engineering design and construction for different kind of power supply.
- C. We Strict implement the operation guideline of *“Leading Technology , Reliable Quality , Satisfactory Service & Customers First !”*.

2.1 ISO 9001

ISO9001:2015 # : 0070018Q58665R0S



IDEALPLUSING company configures advanced testing equipment and adopts advanced testing means to carry out stress analysis, high and low temperature and cycle test, vibration test, impact test, alternating humidity and heat test, safety test, EMC test, MTBF analysis test, FMEA analysis test and accelerated aging test of various components, so as to ensure that The high reliability of power supply products is achieved. Power supply conforms to UL, CE, TUV, CSA, CCC, and other countries' security certification.

2.2 CE & Rohs [LVD&EMC]

 **BST** | A RELIABLE TESTING FOR TRUST
SHENZHEN BST TECHNOLOGY CO., LTD. (SHENZHEN) TESTING FOR TRUST

Certificate of Compliance

Certificate NO. : BSTDG17111033220004EC-1

Applicant	: IDEALPLUSING INFORMATION TECHNOLOGY CO., LTD Building 1, NO.38 Gaopu Road, Tianhe, Guangzhou, Guangdong Province, China. 510520
Manufacturer	: IDEALPLUSING INFORMATION TECHNOLOGY CO., LTD Building 1, NO.38 Gaopu Road, Tianhe, Guangzhou, Guangdong Province, China. 510520
Product Name	: ADJUSTABLE DC POWER SUPPLY
Trade Name	: IDEALPLUSING
Main Test Model	: IPS-ATD10060
Additional Model	: (See Annex)
Test Standard	: EN 55032:2015/AC:2016 EN 61000-3-2:2014 EN 61000-3-3:2013 EN 55024:2010+A1:2015
As shown in the Test Report No.	: BSTDG17111033220004EC-1


The EUT described above has been tested by us with the listed standards and found in compliance with the council EMC directive 2014/30/EU. It is possible to use CE marking to demonstrate the compliance with this EMC Directive.
The certificate applies to the tested sample above mentioned only and shall not imply an assessment of the whole production.





Christina Deng
Manager
Nov. 28, 2017

Shenzhen BST Technology Co., Ltd.
Add: Building No.23-24, Zhiheng Industrial Park, Guanikou Road, Nantou,Nanshan District,Shenzhen,Guangdong,China
Certificate Search: <http://www.bst-lab.com> Tel:400-882-9628, 8009990305, E-mail:christina@bst-lab.com




 **BST** | A RELIABLE TESTING FOR TRUST
SHENZHEN BST TECHNOLOGY CO., LTD. (SHENZHEN) TESTING FOR TRUST

Certificate of Compliance

Certificate No : BST18051126140001Y-1EC-1

Applicant	: IDEALPLUSING INFORMATION TECHNOLOGY CO., LTD Building 1, No.85 Gaopu Road, Tianhe District, Guangzhou Guangdong, China 510520
Manufacturer	: IDEALPLUSING INFORMATION TECHNOLOGY CO., LTD Building 1, No.85 Gaopu Road, Tianhe District, Guangzhou Guangdong, China 510520
Product Name	: POWER INVERTER / PURE SINE WAVE INVERTER
Trade Name	: IDEALPLUSING
Main Test Model	: IPS-DTA10000-220
Additional Model	: See Annex
Test Standard	: EN 55032:2015 EN 61000-3-2:2014 EN 61000-3-3:2013 EN 55024:2010/A1:2015
As shown in the Test Report No.	: BST18051126140001Y-1EC-1

The EUT described above has been tested by us with the listed standards and found in compliance with the council EMC directive 2014/30/EU. It is possible to use CE marking to demonstrate the compliance with this EMC Directive.
The certificate applies to the tested sample above mentioned only and shall not imply an assessment of the whole production.

Christina Deng
Manager
Jun. 04, 2018

Shenzhen BST Technology Co., Ltd.
Add: Building No.23-24, Zhiheng Industrial Park, Guanikou Road, Nantou,Nanshan District,Shenzhen,Guangdong,China
Certificate Search: <http://www.bst-lab.com> Tel:400-882-9628, 8009990305, E-mail:christina@bst-lab.com

 **BST** | A RELIABLE TESTING FOR TRUST
SHENZHEN BST TECHNOLOGY CO., LTD. (SHENZHEN) TESTING FOR TRUST

Certificate of Compliance

Certificate NO : BST18051126140001Y-1SC-2

Applicant	: IDEALPLUSING INFORMATION TECHNOLOGY CO., LTD Building 1, No.85 Gaopu Road, Tianhe District, Guangzhou Guangdong, China 510520
Manufacturer	: IDEALPLUSING INFORMATION TECHNOLOGY CO., LTD Building 1, No.85 Gaopu Road, Tianhe District, Guangzhou Guangdong, China 510520
Product Name	: POWER INVERTER / PURE SINE WAVE INVERTER
Trade Name	: IDEALPLUSING
Main Test Model	: IPS-DTA10000-220
Additional Model	: (See Annex)
Test Standard	: EN 60950-1:2006+A11:2009+A1:2010+A12:2011+A2:2013
As shown in the Test Report No.	: BST18051126140001Y-1SR-2

The EUT described above has been tested by us with the listed standards and found in compliance with the council LVD directive 2014/35/EU. It is possible to use CE marking to demonstrate the compliance with this LVD Directive.
The certificate applies to the tested sample above mentioned only and shall not imply an assessment of the whole production



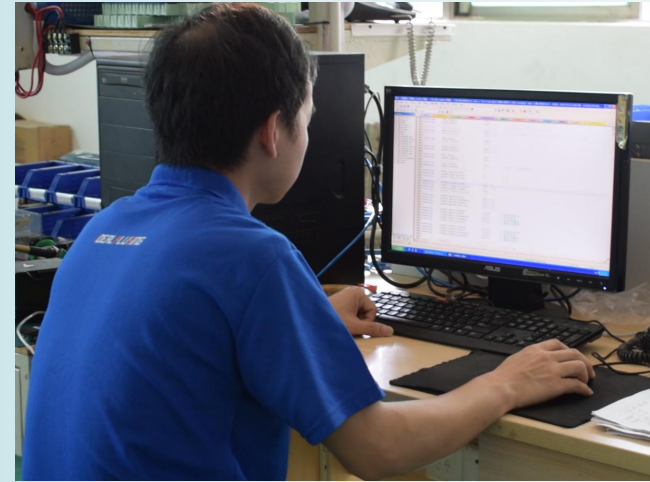


Christina Deng
Manager
June 04, 2018

Shenzhen BST Technology Co., Ltd.
Add: Building No.23-24, Zhiheng Industrial Park, Guanikou Road, Nantou,Nanshan District,Shenzhen,Guangdong,China
Certificate Search: <http://www.bst-lab.com> Tel: 400-882-9628, 8009990305, E-mail:christina@bst-lab.com

3.1 R&D System

1. Every step in the R&D process requires input and output.
2. There are 4 key review points in the R&D process:
 - 01) Scheme design, evaluation
 - 02) schematic design and review
 - 03) PCB and Structural Design, Evaluation
 - 04) Prototype review
3. In the process of R&D, according to the operation instructions, the unqualified items found in the process of evaluation have corresponding feedback process.
4. Design changes occurring in the R&D process should be carried out strictly in accordance with the design change notice.



3.2 R&D System

01) 10 main R&D engineers;

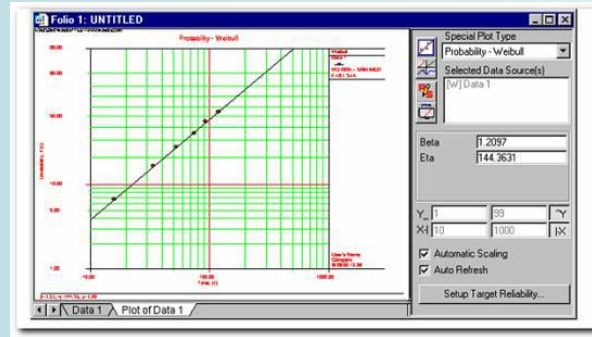
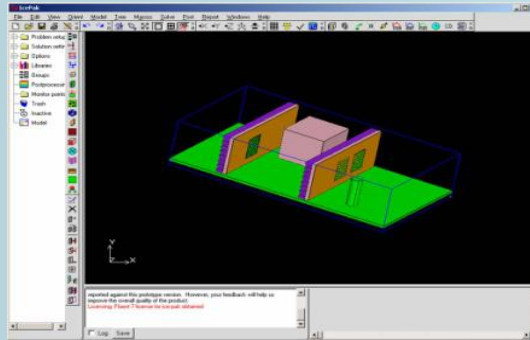
02) 10 have more than 10 years experience, 5 have more than 5 years experience, and the others also have more than 3 years experience;

03) More than 20 people R&D teams;



3.3 R&D System

1. Thermal design simulation software FLOTHERM;
2. Establish the mathematical model of components, simulate the working environment of components, and carry out simulation calculation;
3. It is of great help to the selection of power devices, PCB layout, radiator design, wind circuit design, as well as maximizing power supply efficiency and reducing heat loss;
4. Reducing Design Cost and Improving One-time Success Rate of Products;
5. Improve product performance, improve product reliability and speed up R&D.



3.4 R&D System

Characteristics	Testing Items		
Input	Max Current/Power Factor/Efficiency	Start-up impulse current	BOURN OUT
Output	Load Effect/Source Effect/Cross Adjustment Rate	Ripple & Noise	Dynamic characteristics
Protection	Current Limiting	Current Limiting	Short Circuit
	Over-temperature	Under-voltage	Over-voltage
Battery	Charging Voltage	Charging Voltage	Under-voltage protection
Monitoring	Start Control	AC On-Line Signal	DC On-Line Signal
	Standby Switch-over	Working Indicator Function	Output Voltage Detection
Safe	Resistance/Insulation Impedance	Discharge Time	Grounding Impedance/Contact Current
EMC	EMI*	EMS*	DIP/EFT/SURGE/ESD*
Environmental experiment	High Temperature Continuous Switching Machine Test		
	High Temperature Working Test and Low Temperature Working Test		
	Collision Test, Vibration and Impact Test Drop Test*		
	Loop Stability Test, High Temperature and Humidity Work Test, Lightning Protection Test*		
mechanical properties	Dimension, Weight , Connector		
Reliability Assurance	MTHF , Stress Analysis of Components, HALT test & HASS test*		

Remark: The items add * we tested outside laboratory.

4.1 Raw Material Control System

Component Selection

Constantly improve the material storehouse of components, requiring the development of new products to use as much as possible mature components in the company's material storehouse.

The proportion of new components in each product should not exceed 5%. At the same time, the new components should be tested and evaluated by the testing department before they can be used. For RoHS products, RoHS evaluation and recognition are carried out in the process of device selection at the design stage.

Supplier Evaluation, Certification and Management

1. Component suppliers are required to be general agents or first-class agents in China, or to be purchased directly from manufacturers.
2. For the selection and evaluation of new suppliers, it is necessary to conduct supplier investigation and evaluation before passing the qualification.
3. Monthly performance appraisal for suppliers, vendor site management, document management, supply capacity and quality control, and periodic inspection.

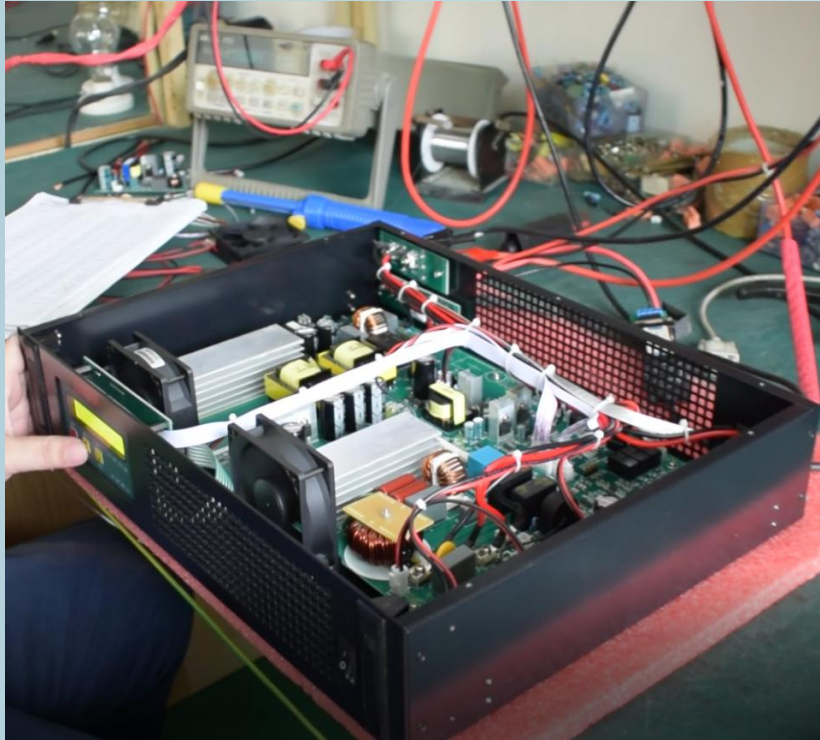
5.1 Production Process

1	Forming Processing of Components and Components
2	SMT
3	Plug-in unit
4	Automatic Wave Soldering Tin
5	Hang up process card
6	Repair welding (component trimming, foot trimming, solder surface repair, washboard)
7	Appearance Inspection (Component Surface Inspection, Veneer Bar Code Inspection, Soldering Surface Inspection)
8	Preliminary PCBA Test
9	Glue
10	PCBA Shell Assembly
11	Safety Testing (Voltage Resistance, Grounding Resistance, Insulation Resistance)
12	Medium Test
13	Ageing
14	Final measurement
15	Check packing
16	OQC Shipment Inspection

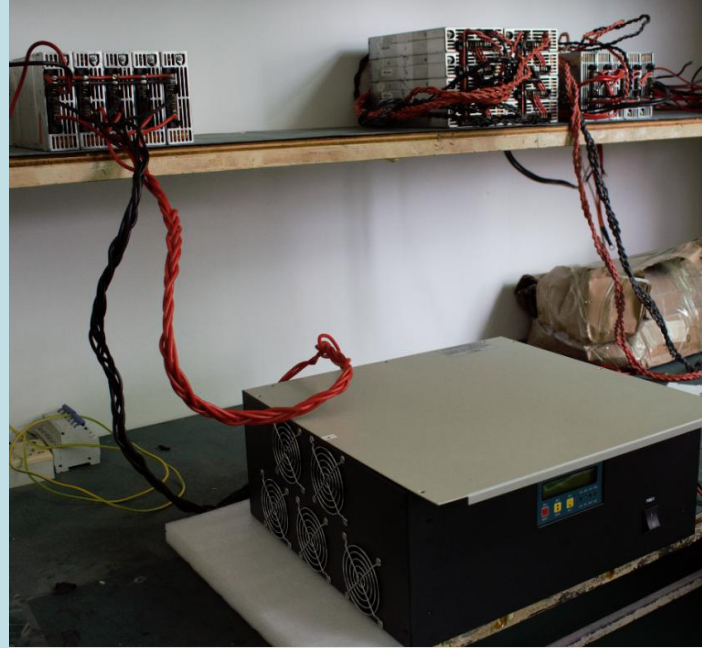
5.2 Production Process



5.3 Production Process



5.4 Production Process



5.5 Production Process



6.1 Company Culture

TENET : Provide perfect Power Supply solution and make worth to the society;

VISION : Develop Hi-tech electric product , accelerate national industry;
and fame IDEALPLUSING around the world in the fields of electric drive and control .



SPIRIT : Faithfully endeavor ,corporate enterprise, pursue innovation

go beyond ourselves;

NOTION: Satisfy customers, intensify core competence and progress with us

VALUE : Employee is the first capital, customer is the source of wages,
investors the supporter of enterprises.

7.1 COMMITMENT

- 01. Any problem of quality , it would refund;**
- 02. 24*7 Whole day service;**
- 03. 12~36 Months Warranty;**
- 04. Fast shipping time in 1~9 working days;**
- 05. PayPal,Western union,T/T, Trade assurance, L/C;**

Sale Team Service

- 01: 09:00AM ~18:00PM**
- 02: 15: 00PM ~22.00PM**

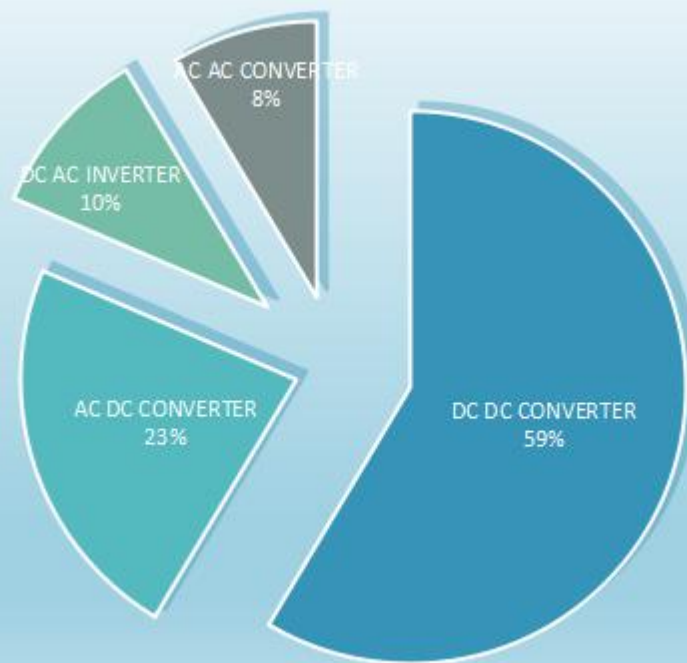
8.1 Our Team & Key Person

Description	Name	E-Mail	Phone
GF - Managing Director	Thomas Liu	idealplusing@gmail.com	86-20-89282095
TL - Technical Director	Hui Ou	converter@idealplusing.com	86-20-89282095
VK - Head of Sales	Sue Yo	susan@idealplusing.com	86-15989132799
VK - Backoffice Sales	Victoria Liu	sale@idealplusing.com	86-15918646947
QM - Quality management	Kim Yo	power@idealplusing.com	86-18029489343
R&D	Thomas Liu	idealplusing@gmail.com	86-20-89282095
Financial department	Min Yo	support@idealplusing.com	86-18998406965
Shipping department	Min Yo	support@idealplusing.com	86-18998406965

9.1 Product Introduction

1. The products are widely used in communications, military, IPC, cloud computing (data center), railway, power, industrial control, medical, instrumentation, new energy, LED and other high-tech fields.
2. High precision of output voltage stabilization and low ripple noise;
3. High power factor, small interference to power grid;
4. Full consideration of electromagnetic compatibility, small electromagnetic interference, avoid the impact on the normal operation of equipment;
5. Various input and output protection and lightning protection design;
6. The working temperature range is large and can adapt to harsh working environment;
7. High reliability, large margin design, can adapt to sudden load changes;
8. Excellent technology, exquisite appearance, components are used after a long period of practice and testing of mature devices;
9. The design concept is advanced, keeping up with the latest design ideas in the world, and constantly improving and updating the R&D design in the long-term simulation test of harsh environment and heavy load to strive for perfection.

9.2 Main Products



9.3 DC DC CONVERTER

1	19 inch 2U/4U/6U.. rack mount type DC DC Converter
2	Isolate DC DC Converter
3	Non-isolate DC DC Converter
4	DC DC Converter system
5	Customize other solar DC DC Converter

9.4 Model List-19 inch 2U/4U/6U

Input Voltage VAC/VDC	OUTPUT Voltage VDC	Output Current AMPS
24VDC 220VAC	48VDC	20A
	110VDC	10A
48VDC 220VAC	48VDC	10A
	48VDC	20A
	48VDC	30A
	48VDC	40A
	24VDC	30A
	24VDC	40A
	24VDC	50A
	110VDC	10A
	110VDC	20A
	220VDC	5A
	220VDC	10A

110VDC 220VAC	24VDC	30A
	24VDC	40A
	24VDC	50A
	48VDC	20A
	48VDC	30A
	48VDC	40A
	110VDC	5A
	110VDC	10A
	110VDC	20A
	220VDC	5A
	220VDC	10A
220VDC 220VAC	24VDC	30A
	24VDC	40A
	24VDC	50A
	48VDC	10A
	48VDC	20A
	48VDC	30A
	48VDC	40A
	110VDC	5A
	110VDC	10A
	110VDC	20A

9.5 Hot Selling Model-19 inch 2U/4U/6U

IPS-DTD220S4810 DC DC CONVERTER

- ① DC input: 220VDC
- ② DC output: 48VDC 10A
- ③ Max Power: 480W
- ④ Telecom use 19inch 2U

IPS-DTD220S4830 DC DC CONVERTER

- ① DC input: 220VDC
- ② DC output: 48VDC 30A
- ③ Max Power: 1440W
- ④ Telecom use 19inch 2U

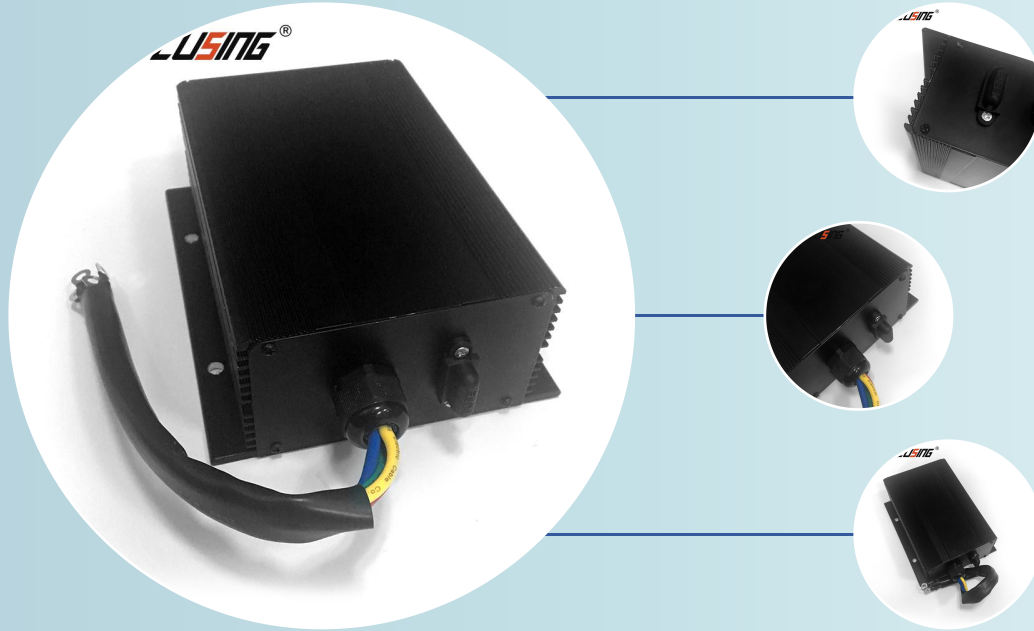
9.6 Pictures-19 inch 2U/4U/6U



9.7 Model List-Isolate DC DC Converter

Type	INPUT-VDC	OUTPUT-VDC
1	48V 60V 72V 84V 96V 108V 120V	12VDC 5A 60W
2	48V 60V 72V 84V 96V 108V 120V	12VDC 10A 120W
3	48V 60V 72V 84V 96V 108V 120V	12VDC 20A25A 240W/300W
4	48V 60V 72V 84V 96V 108V 120V	12VDC 30A 360W
5	48V 60V 72V 84V 96V 108V 120V	12VDC 42A 507W
6	48V 60V 72V 84V 96V 108V 120V	12VDC 50A 600W
7	48V 60V 72V 84V 96V 108V 120V	12VDC 67A 804W
8	48V 60V 72V 84V 96V 108V 120V	12VDC 83.5A 1002W
8	48V 60V 72V 84V 96V 108V 120V	12VDC 125A 1500W

9.8 Pictures-Isolate DC DC Converter



9.9 Hot Selling Model-Isolate DC DC Converter

IPS-DTD96S1250 CONVERTER

② DC INPUT: 96VDC (48~120VDC)

③ UTPUT POWER: 12VDC 50A

Netherlands, France, Poland, Mexico,
USA, Australia, Chile....

IPS-DTD48S1230 CONVERTER

② DC INPUT: 48VDC (48~120VDC)

③ UTPUT POWER: 12VDC 30A

Viectman, Thailand, Philippines, India,
Africa...

9.10 Non-Isolate Boost DC DC Converter

Model/Series	Input to output	Output Current (Be option)
IPS-DTD5~11S12**	5~11v to 12v	1/2/3/4/5/8/10A
IPS-DTD12S15**	12V to 15V	1/2/3/4/5/8/10/12/15A
IPS-DTD12S19**	12V to 19V	1/2/3/4/5/8/10/12/15/20A
IPS-DTD12S24**	12V to 24V	1/2/3/4/5/8/10/12/15/20/25/30/40/50A
IPS-DTD12S28**	12V to 28V	3/5/8/10/15/20/30/40A
IPS-DTD12S36**	12V to 36V	1/1.5/2/3/5/6/10/20/30/40A
IPS-DTD12S48**	12V to 48V	1/1.5/2/3/5/6/8/10/15/20A
IPS-DTD12S56**	12V to 56V	3/5/6A
IPS-DTD24S36**	24V to 36V	2/3/5/8A
IPS-DTD24S48**	24V to 48V	2/3/5/6/10/15/20/30/40A

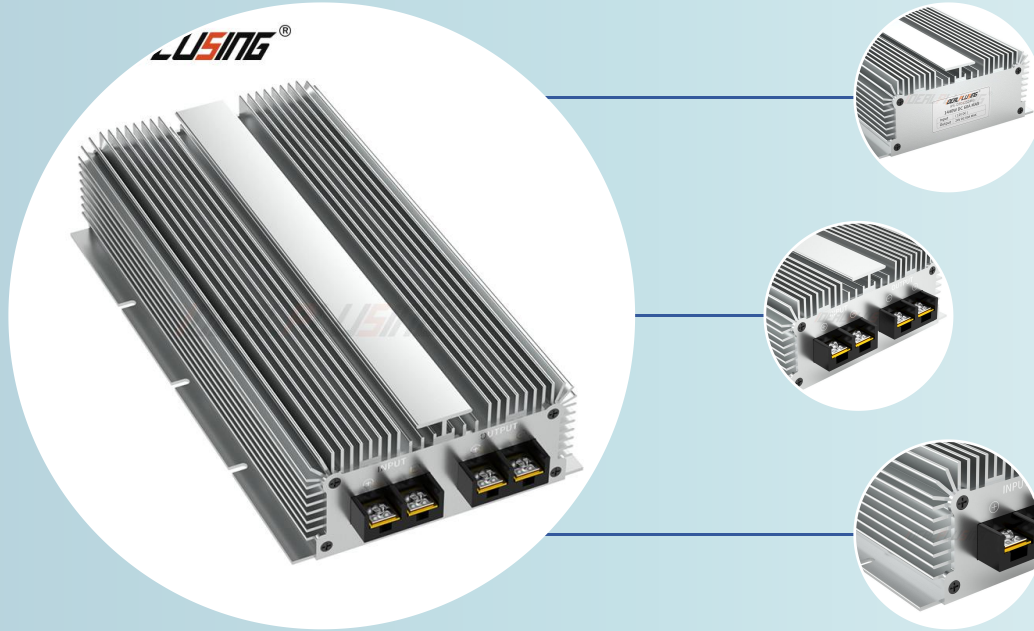
9.11 Non-Isolate Step Down DC DC Converter

IPS-DTD12S5**	12V to 5V	1/2/3/4/5/6/8/10/15/20/30/40/50/60A
IPS-DTD1224S5**	12/24V to 5V	1/2/3/4/5/6/8/10/15/20/30/40/50/60A
IPS-DTD1224S6**	12/24V to 6V	1/2/3/4/5/6/8/10/15/20/30/40/50/60A
IPS-DTD24S12**	24V to 12V	1/2/3/4/5/6/8/10/12/15/18/20/22/25/28/30/40/50/60/85/100/120A
IPS-DTD24S13.8**	24V to 13.8V	5/10/15/20/30/40/50/60A
IPS-DTD24S15**	24V to 15V	5/8/10/15/20/25A
IPS-DTD24S19**	24V to 19V	5/6/8/10/15/20/25A
IPS-DTD36S12**	36V to 12V	5/10/15/20/30/50/60A
IPS-DTD48S5**	48V to 5V	5/6/8/10/15/20A
IPS-DTD48S12**	48V to 12V	1/2/3/5/6/8/10/15/20/25/30/50/60A
IPS-DTD48S13.8**	48V to 13.8V	5/10/15/20/30/50/60A
IPS-DTD48S19**	48V to 19V	5/8/10A
IPS-DTD48S24**	48V to 24V	1/1.5/2/3/5/6/8/10/15/20/30/40/50A
IPS-DTD48S36**	48V to 36V	10A
IPS-DTD60S5**	60V to 5V	8/10/15/20A
IPS-DTD60S12**	60V to 12V	5/8/10/15A
IPS-DTD60S13.8**	60V to 13.8V	15A
IPS-DTD60S24**	60V to 24V	3/5/8/10/15A

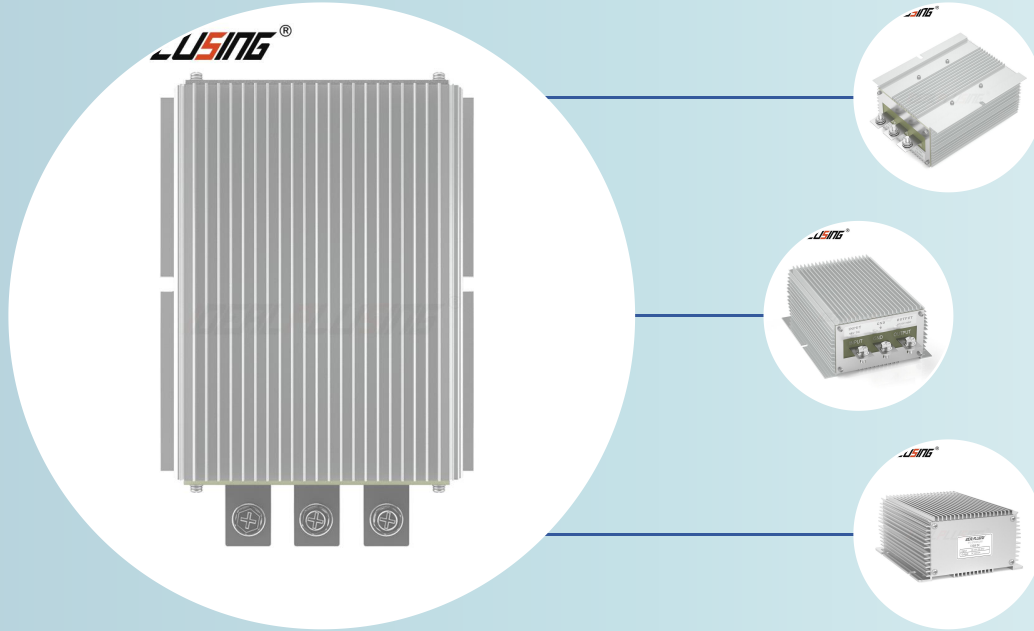
9.12 Stable Converter & Charger

Model/Series	Input to output	Output Current (Be option)
IPS-DTD12S12**	8~20V to 12V	1/5/6/10/15/20/25/30A
IPS-DTD1224S12**	8~36V to 12V	1/5/6/10/15/20/25/30A
IPS-DTD1224S12.6**	8~36V to 12.6V	1/5/6/8/10/15/20/25/30A
IPS-DTD1224S13.8**	8~36V to 13.8V	1/5/6/8/10/15/20/25/30A
IPS-DTD1224S13.8**	8~36V to 14.5V	1/5/6/8/10/15/20/25/30A
IPS-DTD1224S19**	9~36V to 19V	1/5/6/10/15/20/25/30A
IPS-DTD1224S24**	9~40V to 24V	1/5/6/10/15/20/25/30A
IPS-DTD1224S278	9~40V to 27V	8A
IPS-DTD24S2720	18~36V to 27V	20A
IPS-DTD12/24S288	8~36V to 28V	8A
IPS-DTD24S2820	18~36V to 28V	20A

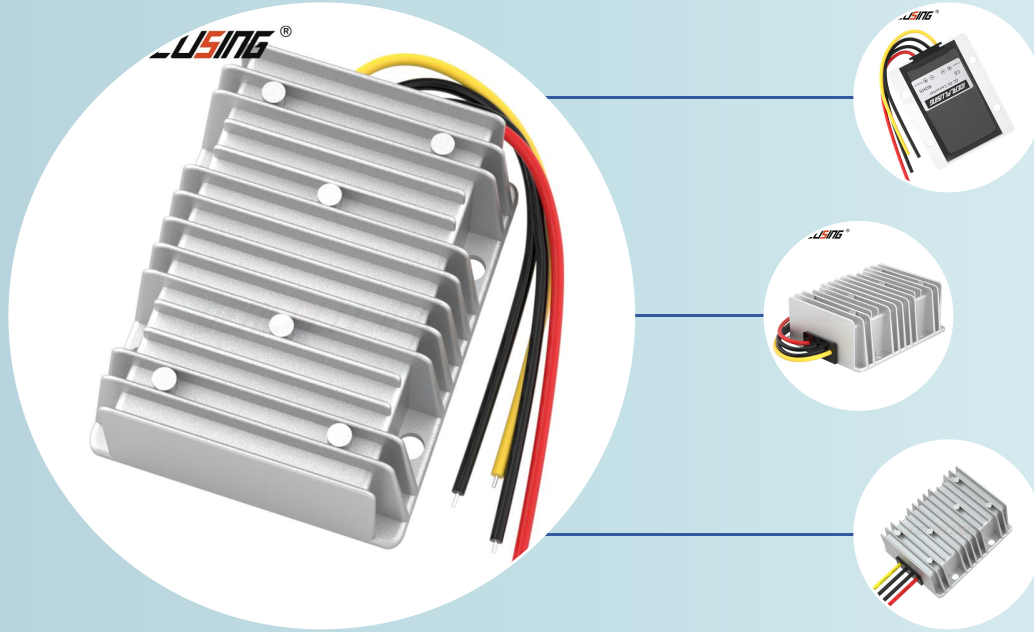
220*130*50 (MM) DC DC Converter



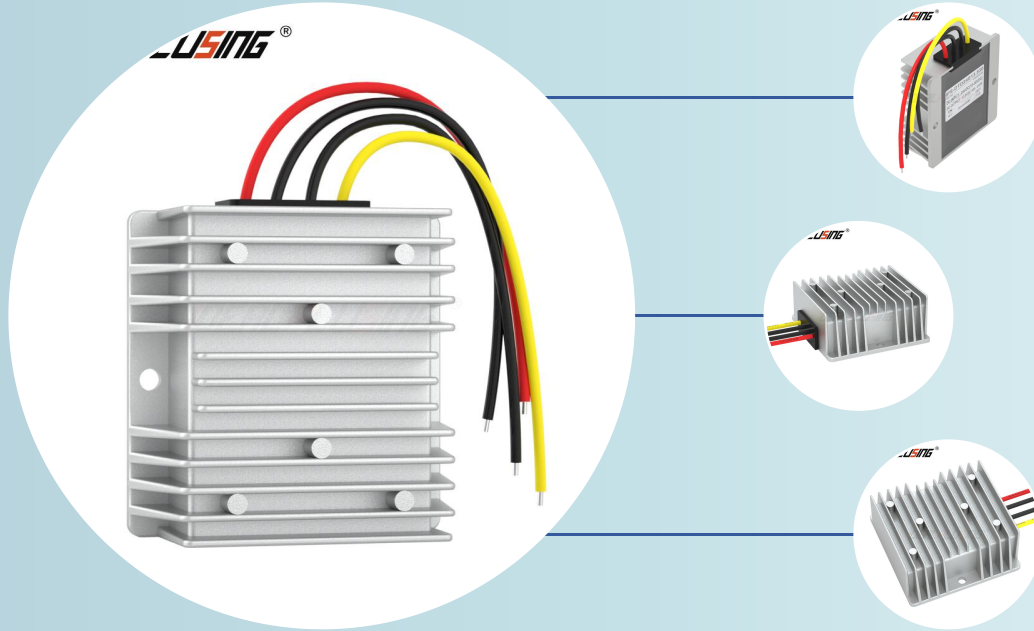
150*127*63 (MM) DC DC Converter



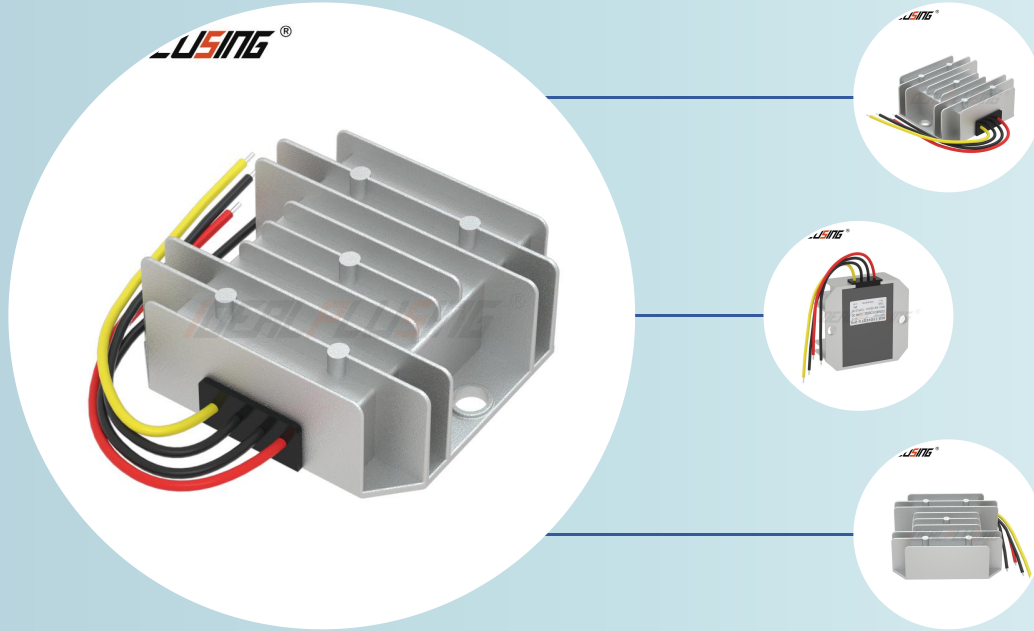
100*80*39* (MM) DC DC Converter



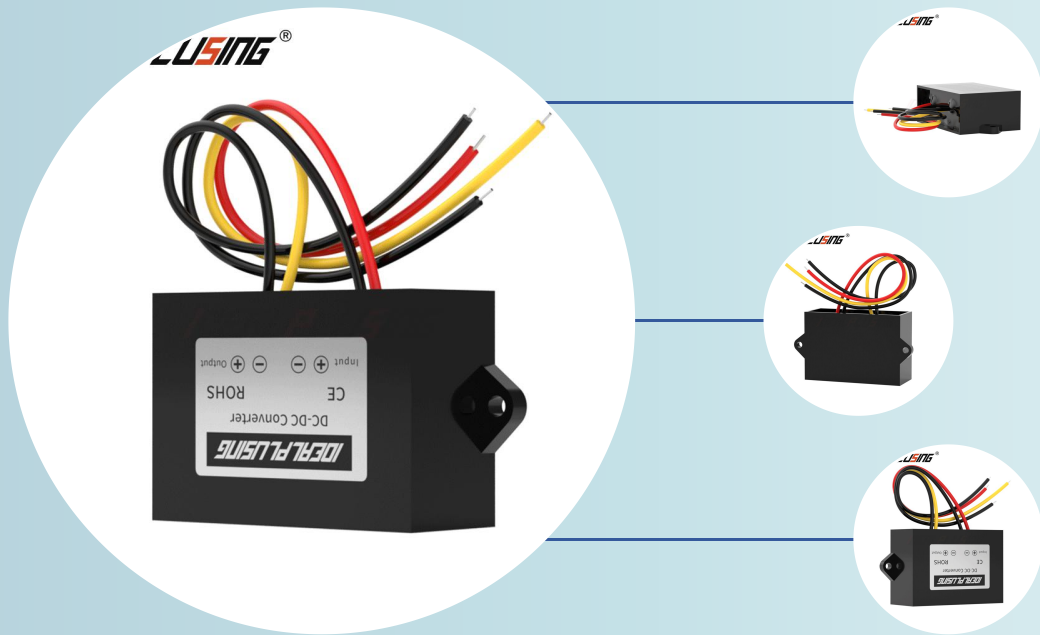
74*74*32 (MM) DC DC Converter



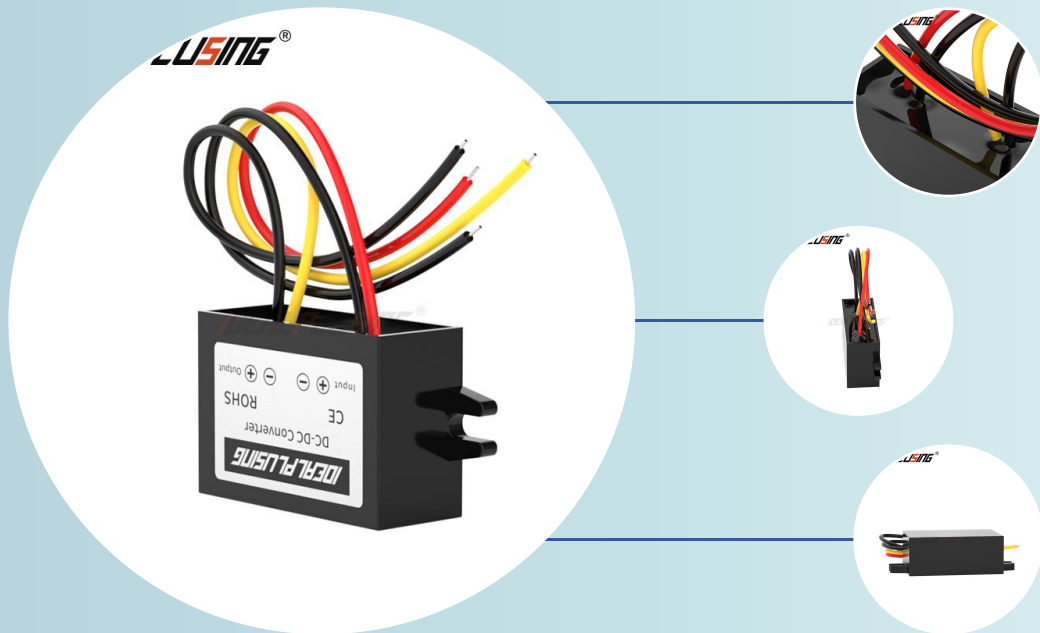
66*57*22 (MM) DC DC Converter



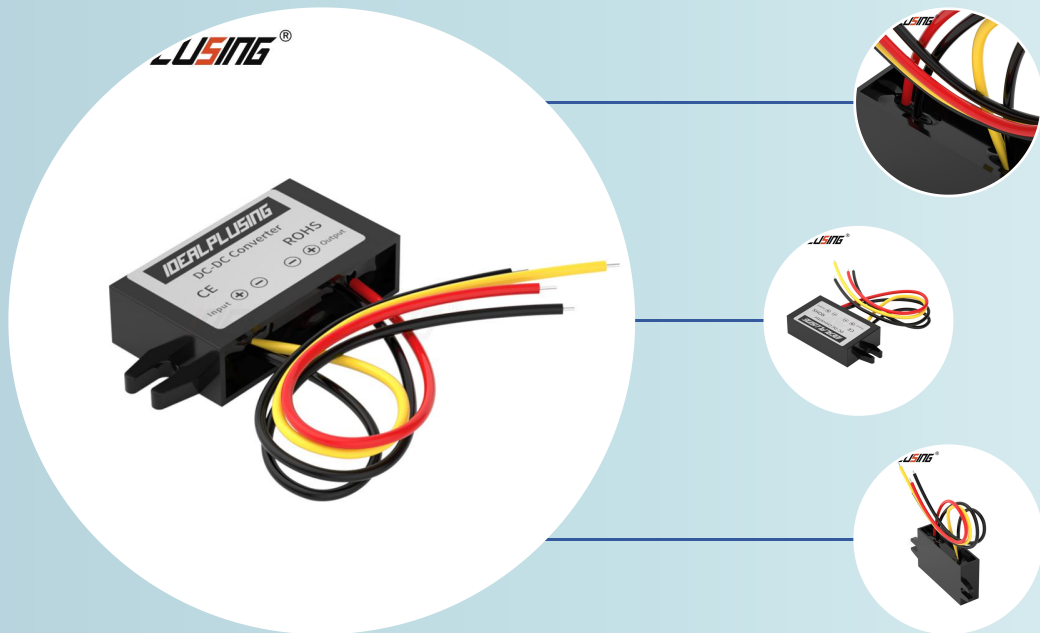
58*40*22 (MM) DC DC Converter



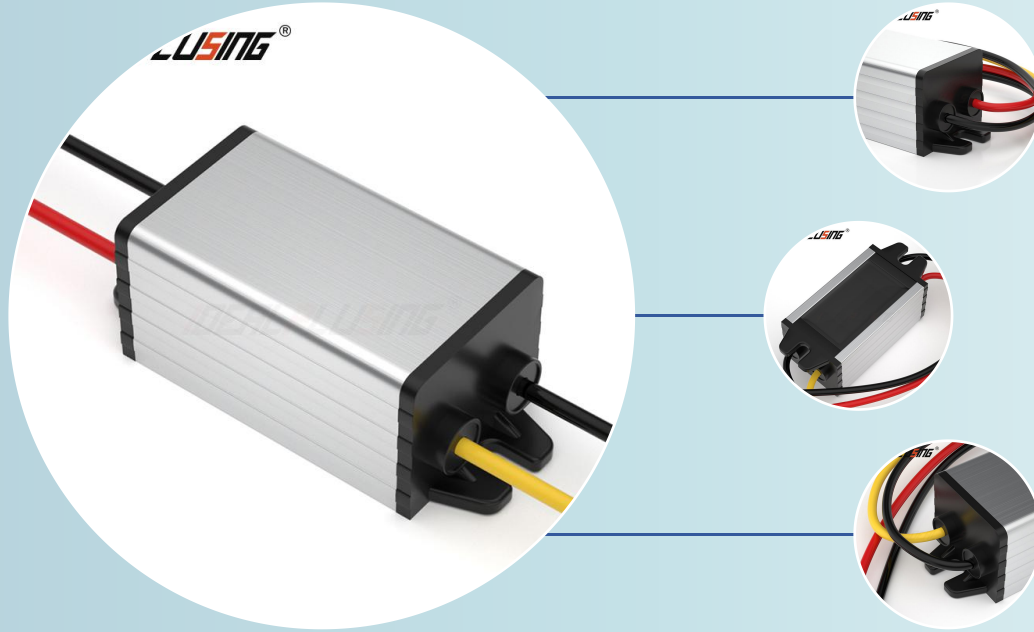
46*32*18 (MM) DC DC Converter



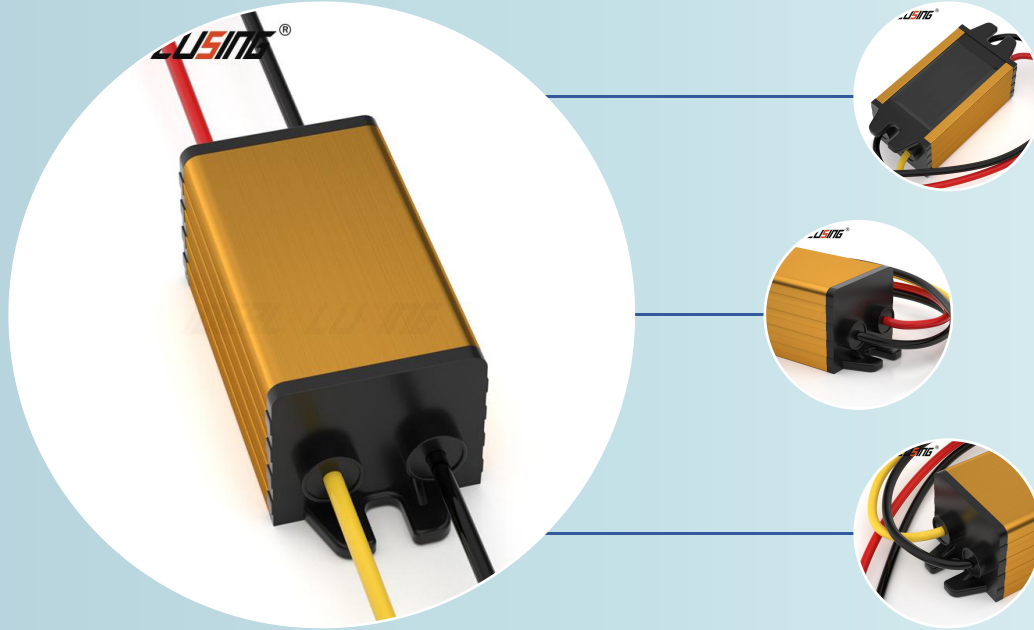
46*27*14 (MM) DC DC Converter



44*24.5*20 (MM) DC DC Converter



44*24.5*20 (MM) DC DC Converter



9.14 Model List-Variable AC DC Power Supply

Type	INPUT-VAC	OUTPUT-VDC
100~999W	1 phase 110/220/240VAC 50/60HZ	100~999W
1000~1999W	1 phase 110/220/240VAC 50/60HZ	1000~1999W
2000~2999W	1 phase 110/220/240VAC 50/60HZ	2000~2999W
3000~5999W	1 phase 110/220/240VAC 50/60HZ	3000~5999W
6000~9999W	3 phases 380/415/450VAC 50/60HZ	6000~9999W
10~15KW	3 phases 380/415/450VAC 50/60HZ	10~15KW
15~20KW	3 phases 380/415/450VAC 50/60HZ	15~20KW
20~30KW	3 phases 380/415/450VAC 50/60HZ	20~30KW
31~50KW	3 phases 380/415/450VAC 50/60HZ	31~50KW

9.15 Hot Selling Model-Variable AC DC Power Supply

Model	Main Specification
IPS-ATD10010	INPUT:1 phase 110/220/240VAC 50/60HZ, OUTPUT:1~100VDC ,0.1~10A, 1KW
IPS-ATD15010	INPUT:1 phase 110/220/240VAC 50/60HZ, 1.5~150VDC ,0.1~10A, 1.5KW
IPS-ATD3005	INPUT:1 phase 110/220/240VAC 50/60HZ, 3~300VDC ,0.05~5A, 1.5KW
IPS-ATD20010	INPUT:1 phase 110/220/240VAC 50/60HZ, 2~200VDC ,0.1~10A, 2KW
IPS-ATD5005	INPUT:1 phase 110/220/240VAC 50/60HZ, 5~500VDC ,0.05~5A, 2.5KW
IPS-ATD60010	INPUT: 3 phase 380/415/450VAC 50/60HZ, 6~600VDC ,0.1~10A, 6KW
IPS-ATD100010	INPUT: 3 phase 380/415/450VAC 50/60HZ, 10~1000VDC ,0.1~10A, 10KW
IPS-ATD200100	INPUT: 3 phase 380/415/450VAC 50/60HZ, 2~200VDC ,1~100A, 20KW

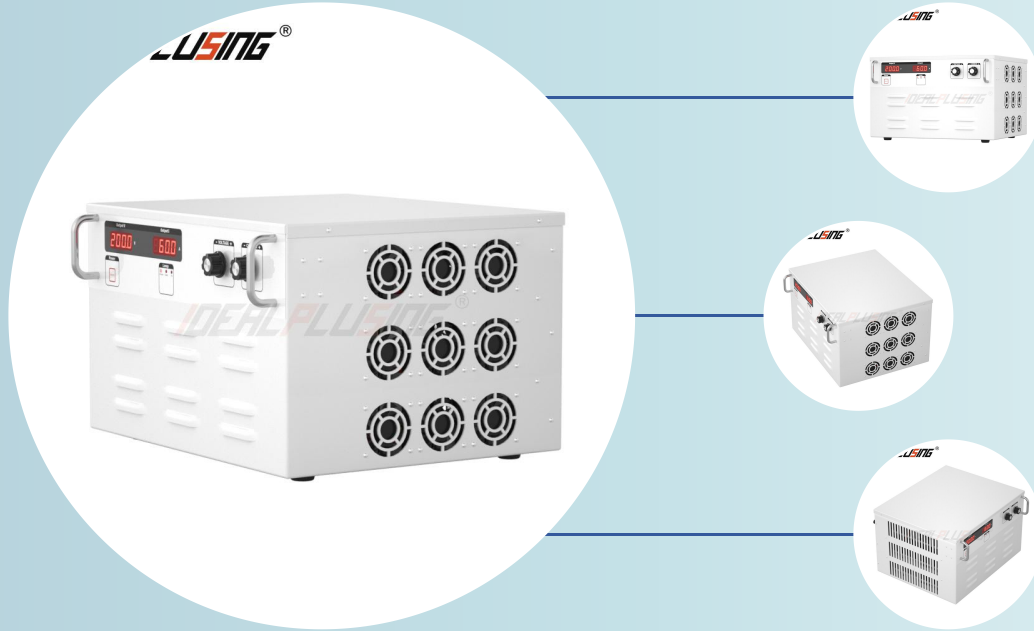
430*370*440 (MM) Variable AC DC Power Supply



430*370*352 (MM) Variable AC DC Power Supply



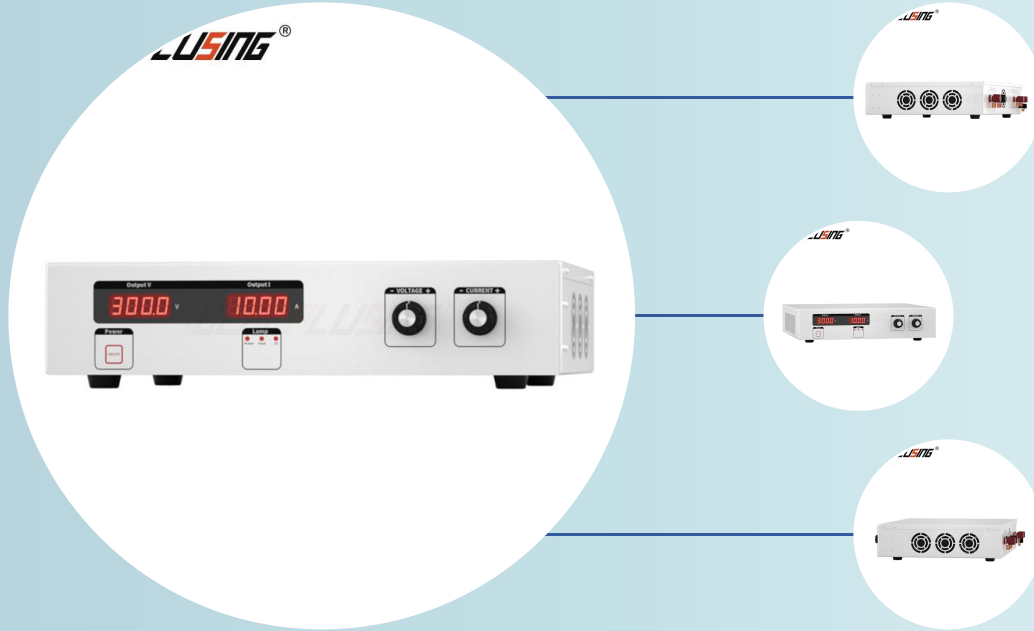
430*370*264 (MM) Variable AC DC Power Supply



430*370*176 (MM) Variable AC DC Power Supply



430*350*88 (MM) Variable AC DC Power Supply



240*330*88 (MM) Variable AC DC Power Supply



165*330*88 (MM) Variable AC DC Power Supply



9.16 Model List-DC AC Converter

Input & Output voltage	Capacity
220VAC output design	
24VDC/220VAC	1~5KVA
48VDC/220VAC	1~6KVA & 8KVA&10KVA
110VDC/220VAC	1~6KVA & 8KVA&10KVA
220VDC/220VAC	1~6KVA & 8KVA&10KVA
120VAC output design	
24VDC/120VAC	1~5KVA
48VDC/120VAC	1~6KVA
110VDC/120VAC	1~6KVA

9.17 Hot Selling Model-DC AC Power Inverter

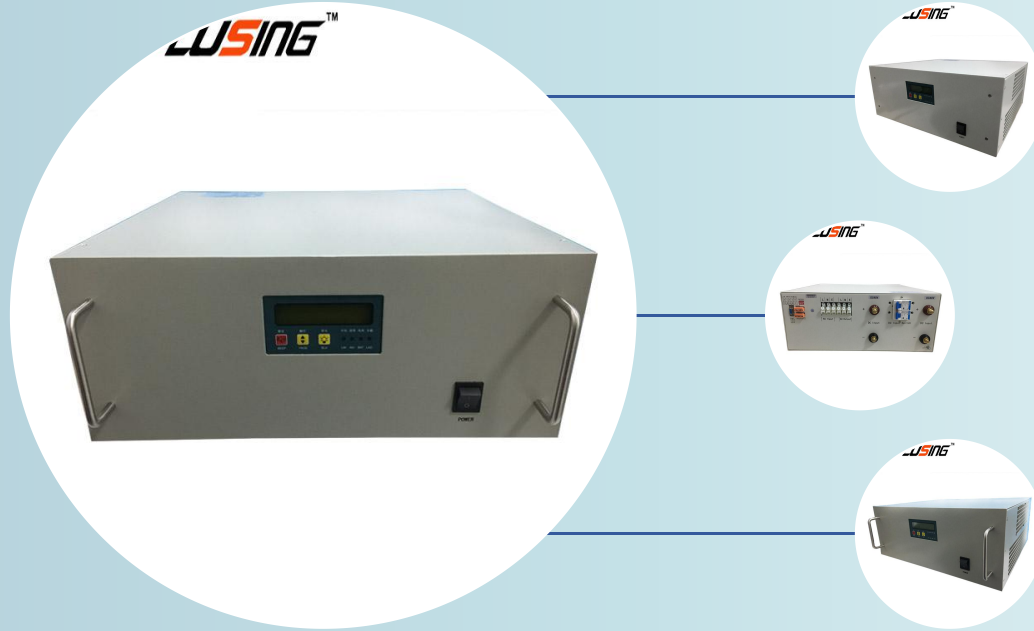
Model : IPS-DTA3000-48 3KVA 48Vdc to 220Vac Power converter

- ① Wave shape : Pure Sine Wave
- ② DC Rate Input : 48VDC
- ③ Working voltage range: 40~58.8V
- ④ Start up voltage range: 42~57V
- ⑤ AC By Pass Input: 220VAC
- ⑥ AC Output : 220V 50Hz or 60Hz
- ⑦ Rate Capacity: 3000VA, 2400W
- ⑧ Mounting : 19 inch 2U Rack Type
- ⑨ Protection : input under voltage, over voltage output overload and short circuit protection
- ⑩ Communication interface: RS485 *1
- ⑪ LCD indicator*1

IPS-DTA3000-110-Q 3KVA 110Vdc to 220Vac Power converter

- ① Wave shape : pure sine wave
- ② DC INPUT : 110VDC
- ③ Working Voltage range: 90~145VDC
- ④ Start-Up Voltage range: 94~142VDC
- ⑤ AC OUTPUT : AC220V \pm 10V 50Hz/60Hz
- ⑥ Rate Capacity: 3000VA, 2400W
- ⑦ Mounting : 19 inch 2U rack type
- ⑧ Protection : input under voltage, over voltage, output overload and short circuit protection
- ⑨ RS485 communication interface
- ⑩ LCD indicator*1

482*177*440 (MM) DC AC Power Inverter



482*368*88 (MM) DC AC Power Inverter



482*44*300 (MM) DC AC Power Inverter



9.18 Model List-Rectifier Power Supply/System

Type	INPUT-VAC	OUTPUT-VDC
AC DC	110/220VAC/380VAC	24VDC,10~700A
AC DC	110/220VAC/380VAC	48VDC,10~700A
AC DC	110/220VAC/380VAC	110VDC,10~700A
AC DC	110/220VAC/380VAC	220VDC,10~700A

9.20 Hot Selling Model-Rectifier Power Supply/System

IPS-RT4830

- ① AC input: 220VAC 50/60hz
- ② DC output : 48VDC 30A
- ③ Battery interface: 1PC
- ④ Machine size : 19inch 2U

IPS-RT4860

- ① AC input: 220VAC 50/60hz
- ② DC output : 48VDC 60A
- ③ Battery interface: 1PC
- ④ Machine size : 19inch 2U

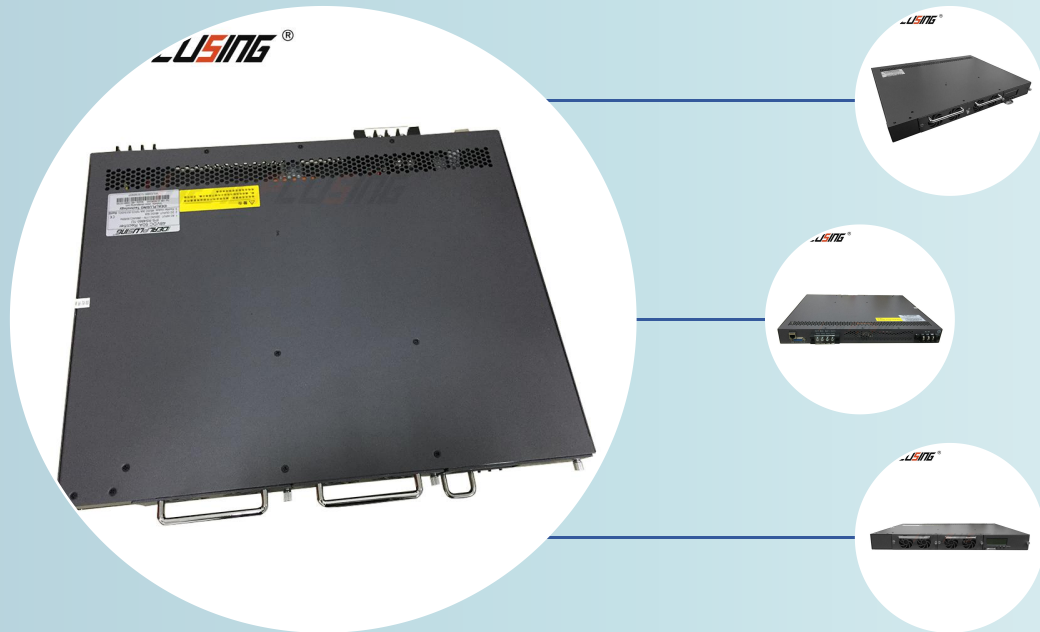
IPS-RS4860-1U

- ① AC INPUT : 220VAC
- ② DC OUPUT: 48VDC 60A
- ③ 2PCS 48vdc 30a rectifier module
- ④ 1 Monitor Module
- ⑤ Capacity: 3120W
- ⑥ 19 INCH 1U design
- ⑦ Output 1 : 1CHS Battery, can charge battery
- ⑧ Output 2: 1CHS Load , can start up the load

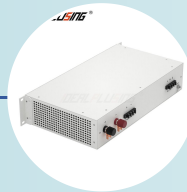
IPS-RS4890-3U

- ① AC INPUT : 220VAC 50/60hz
- ② DC OUPUT: 48VDC 90A
- ③ DC distribution: 3PCS 48vdc 30a rectifier modules
- ④ 1 Monitor Module
- ⑤ Capacity: 4815W
- ⑥ 19inch 3U rack mount type
- ⑦ Load: 15A1P*4CHS、40A1P*2CHS、60A1P*4CHS;
- ⑧ Battery: 60A1P×2CHS

482*44*290 (MM) Rectifier Power Supply/System



482*240*88(MM)-Rectifier Power Supply/System



482*44*290 (MM) Rectifier Power Supply/System



9.21 Others Rectifier Power Supply/System



9.21 Others Rectifier Power Supply/System



9.22 Model List-Battery Charger

Type	INPUT-VAC	OUTPUT-VDC
AC DC	110/220VAC/380VAC	12VDC 1~200A
AC DC	110/220VAC/380VAC	24VDC 1~200A
AC DC	110/220VAC/380VAC	36VDC 1~200A
AC DC	110/220VAC/380VAC	48VDC 1~200A
AC DC	110/220VAC/380VAC	60VDC 1~200A
AC DC	110/220VAC/380VAC	72VDC 1~200A
AC DC	110/220VAC/380VAC	84VDC 1~200A
AC DC	110/220VAC/380VAC	96VDC 1~200A
AC DC	110/220VAC/380VAC	120VDC 1~200A
AC DC	110/220VAC/380VAC	132VDC 1~200A
****	****	***

9.23 Hot Selling Model-Battery Charger

IPS-BC1230 12VDC 30A battery charger

A.Input: 220VAC 50/60HZ

B.Output: 12VDC 40A

C.Size: 173*90*63(MM)

IPS-BC3610 36VDC 10A Battery Charger

① Input: Single phase 100~132vdc 50/60hz

② Output: 36VDC 10A

③ Machine Size: 135*90*50(MM)

IPS-BC6060 full automatic battery charger

① AC INPUT: single phase 220VAC 50/60HZ

② DC OUTPUT voltage: 60VDC

③ Float 72.5V, Equal 67.5V

④ Charging current: 0.6~60A

⑤ Machine size: 430(L)*370(W)*176(H)MM

⑥ Package size: 510(L)*510(W)*280(H)MM

⑦ NW: 18KG ,GW: 20KG

IPS-BC4860 full automatic battery charger

① AC INPUT: single phase 220VAC 50/60HZ

② DC OUTPUT voltage: 48VDC

③ Float 54V, Equal 58V

④ Charging current: 0.6~60A

⑤ Machine size: 430(L)*370(W)*176(H)MM

⑥ Package size: 510(L)*510(W)*280(H)MM

⑦ NW: 18KG ,GW: 20KG

9.24 Battery Charger



10.1 FAQ COLLECTION

Question 1: Why Should We Choose Your Company [IDEALPLUSING]Over Others?

1)Customer testimonial

2)You have the choice of numerous professional, knowledgeable, and competent power supply vendors committed

to serving their clients.We feel we' re one of them.

3)In lieu of listing all the reasons we think you should choose us, we thought it would be a better idea to ask

our existing clients why they chose and decided to stay with our company.

Below is a sampling of our clients' answers:

4)The following unsolicited letter from the owner of the Company witch locates in Chile summarized for us why

we believe most of our clients choose us over others. Don't ask us, ask our clients.

5) "Call our clients and see if they are willing to serve as third-party testimonials for our work.

I think you'll enjoy listening to what they say." Do You Prioritize What We Deliver?

01. We believe in being a flexible, customer-driven partner. We believe in delivering value through innovation.

02. We believe in speed-to-market.

03. We believe everything starts, and ends, with quality.

04. We believe in becoming an extension of our customers' teams.

05. We believe that no matter the size of the project, it deserves the very best. We believe in an open and honest relationship.

06. We do not believe in shortcuts.

FAQ COLLECTION

Question 2: Are We The Right 'Fit' For You?

Why should you choose to work with us is not because how good we are boasting or how cheap our product seems to be.

It is because our offer bridges Your needs and our solution addresses your pain; It is because our product is able to achieve your desired result and performance; It is because our market positioning matches yours and our commitment resonates with you;

It is because our competence to work out a proposal that springs a "before VS after" clears Your worry.

It is because our market performance and customer referral allows for Your joined trust.

Question 3: Do you have any customer in India/USA/Canada...? Can you share their names?

I am afraid we are not able to disclose their names because they require privacy and have signed a NDA agreement with us. We owe a duty of care to our clients to prevent any risk of harm.

If we can work together, we will also keep all of your information safe. Thanks for your understanding.

FAQ COLLECTION

Question 4: Can you offer us discount?

1)We can definitely have a conversation about specific numbers, but let' s make sure we' re on the same page about this solution being a good fit for your needs.

2)We do have a discount program for those prospective clients who are willing to help us with Local promotion.

If you join it. We do not even need to worry about discount

Question 5: Why is your price so high/ Why is your product so cost-effective?

1)With our mission to help our customers cut down converting costs, we don't believe in over-priced strategy.

2)We have been striving to do our best to keep price as low as possible without sacrificing quality, for instance, our critical components are designed, manufactured and assembled in-house. Beyond that, We improve the competitiveness on manufacturing costs by actively seeking the best possible component options and manage supply chain logistics.

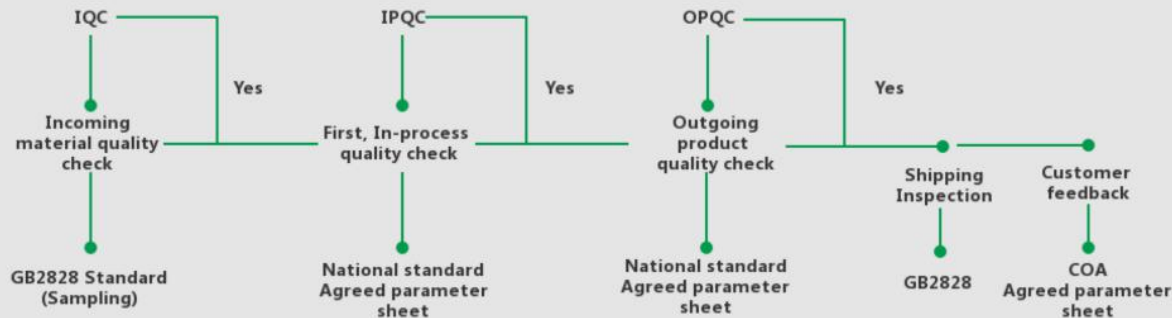
3)We hope that by giving best support on price to you, we could help ease your capital pressure and develop a mutually beneficial business relationship together.

FAQ COLLECTION

Question 6: How do you ensure product quality?

1. You deserve the highest-quality contract manufacturing and packaging services every single time. This is why our industry-leading Quality System extends throughout the supply chain—from product receipt to final delivery—at every of our facility.
2. This ensures quality products and timely delivery you can count on.
3. Complete trace-ability comes standard here, along with full CE & Rohs compliance. You also have access to our innovative in-house labs for verification and testing solutions. We have a proven track record of creating smart, go-to-market solutions—all supported by a robust Quality System.

Quality control flow chart



FAQ COLLECTION

Question 7: How do you ensure the quality of machine before delivery?

Power supply machine are also tested for their performance, speed and productivity in harsh conditions by final quality control teams before delivery. An average test may take up to 5-7 days in accordance with the specifications of the machines. Moreover, our component providers run additional test procedures for their products on our machines.

11.1 After-sales support

1. IDEALPLUSING have a strong R&D and QC department and capable after-sale service team.
2. The detailed defective description, serial number of product and photo of product must be sent back to IDEALPLUSING for evaluation accordingly.
3. IDEALPLUSING shall analyze the defective reason and decide whether it is caused by quality problem of product or by improper operation of user.
4. IDEALPLUSING shall suggest which parts of products should be replaced. In case of quality problem, IDEALPLUSING shall replace a new product for defective one which power rating is under 5.5KW within warranty time. For the product which power rating is 100KVA and above or Purchase more than 10units in one order, IDEALPLUSING shall offer spare parts including control board, power board, fan or other related parts which are necessary for repairing product free of charge.
5. IDEALPLUSING warranty do not cover damages resulting from inappropriate storage, incorrect installation, improper maintenance and bad environment beyond environmental requirement.
6. IDEALPLUSING is not responsible for modifications, reworking, disassemble without our permission.

12.1 Customer Review

#	Country	Date	Review
1	Germany	12 Jul 2019	They are very professional as usual!
2	Germany	11 Jul 2019	Very Good. We expecting for long cooperation.
3	USA	04 Jul 2019	Working with Idealplusing was very easy - great customer service, and great product. I look forward to working with them for a long time.
4	USA	28 Jun 2019	Wonderful folks to deal with, will order from them in the future.
5	France	26 Jun 2019	Very professional!
6	Ukraine	27 May 2019	Everything is fast and high quality
7	Madagascar	25 Apr 2019	They went well out of their way to help us with the importation of the products. I can highly recommend this company.
8	France	04 Apr 2019	The sales girl Victoria is really professional, and respond quickly, that is important for me. Because we have time difference; Before sending they confirm everything then sending out, and the package is perfect. We did full load test it is running well. We will order soon again. Well done! Thanks for all effort!

More information please visits us as below

Website: www.idealplusing.com

Alibaba: idealpusing.en.alibaba.com

Facebook: <https://www.facebook.com/Idealplusing/>

Linkedin: <https://www.linkedin.com/company/13374833/admin/>

Whatsapp: [86-15989132799](https://wa.me/8615989132799)

**If you have new inquiry or you need technical support.
Please do not hesitate to tell us.
Because it will not cost you one cent when you asking
us anything. But it may be a chance for both of us.**



Open your wechat and Scan us

Thanks !